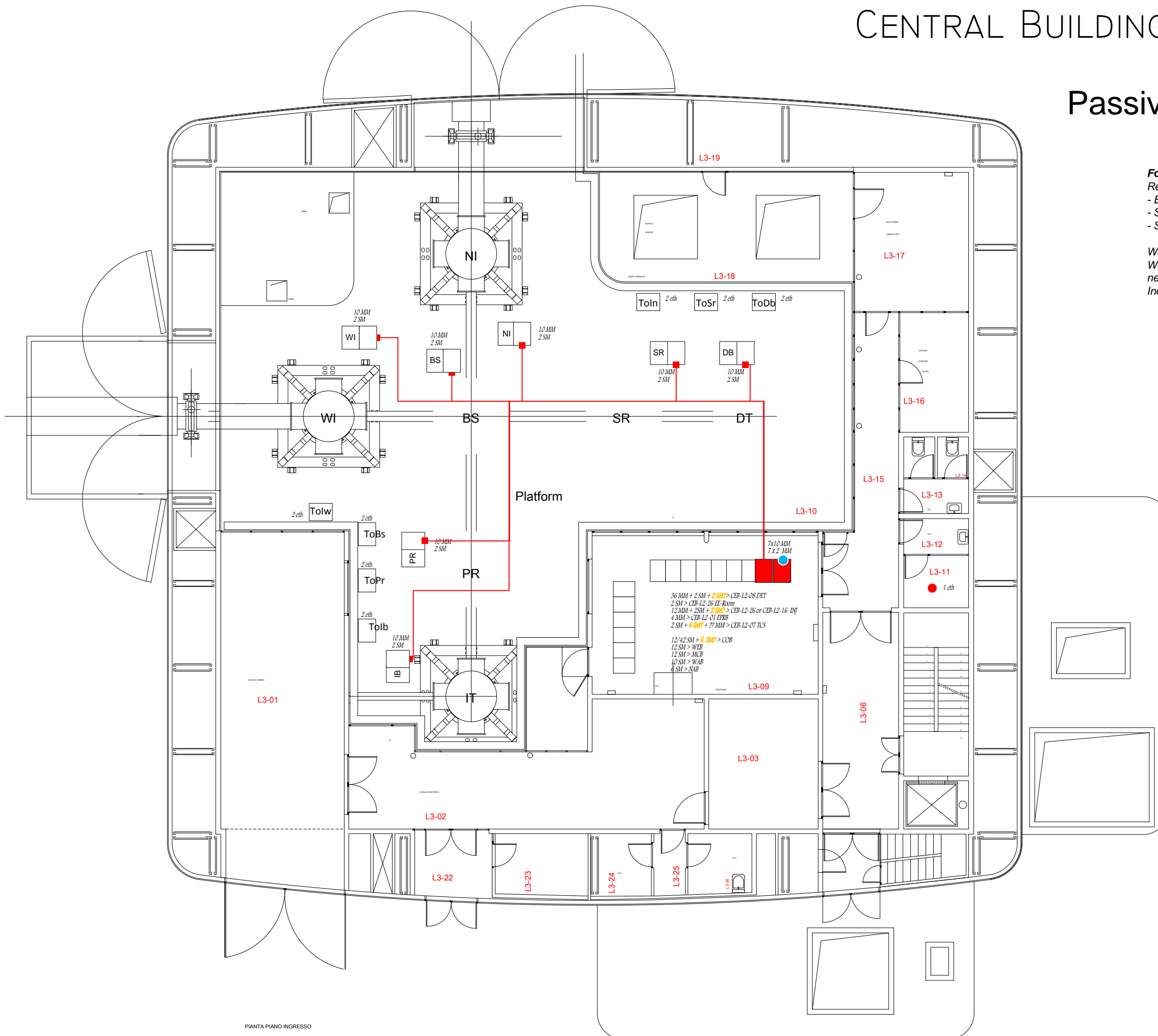


# CENTRAL BUILDING (CEB), LEVEL 3

## Passive network endpoints



### For the purpose of the tray paths layout

Requests only (no spares) for:

- Ethernet RJ45 ports
- Single-mode/Multi-mode fibers (including network)
- Special cables (HS C-link, Phase camera fiber)

Wall plugs not indicated

Whereas the requested eth ports are served by a switch (in a network rack) only the uplink fibers are indicated

Includes both new and already existing endpoints

<span style="color: red;">●</span>	Patch cable endpoint
<span style="color: blue;">●</span>	Passive backbone endpoint
<span style="background-color: red; width: 10px; height: 10px; display: inline-block;"></span>	Network rack
<span style="color: blue;">●</span> <span style="color: red;">●</span> - - -	Possibilities
eth	RJ45 port
MM	Multi-mode fiber
SM	Single-mode fiber
<span style="color: yellow;">SM</span>	HS cameras