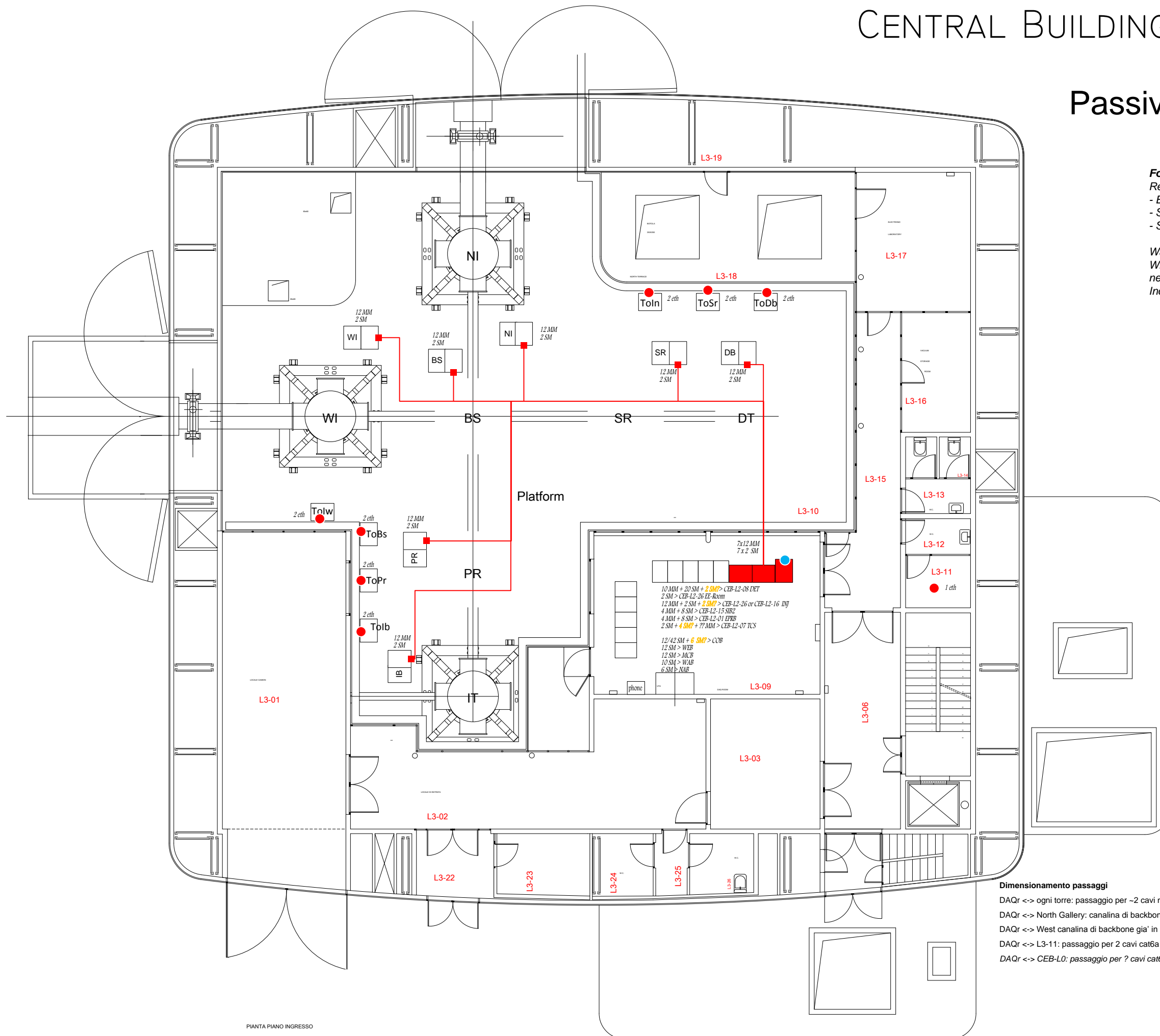


CENTRAL BUILDING (CEB), LEVEL 3

Passive network endpoints



For the purpose of the tray paths layout

Requests only (no spares) for:

- Ethernet RJ45 ports
- Single-mode/Multi-mode fibers (including network)
- Special cables (HS C-link, Phase camera fiber)

Wall plugs not indicated

Whereas the requested eth ports are served by a switch (in a network rack) only the uplink fibers are indicated

Includes both new and already existing endpoints

●	Patch cable endpoint
●	Passive backbone endpoint
■	Network rack
● ● - - -	Possibilities
eth	RJ45 port
MM	Multi-mode fiber
SM	Single-mode fiber
SM	HS cameras

Dimensionamento passaggi

DAQr <-> ogni torre: passaggio per ~2 cavi multifibra Ø7.8mm

DAQr <-> North Gallery: canalina di backbone 300mm che si congiunge con quella del braccio nord e serve la parete est sulla piattaforma

DAQr <-> West canalina di backbone già in progetto (400mm) che raccoglie i passaggi previsti da CEB-L2

DAQr <-> L3-11: passaggio per 2 cavi cat6a

DAQr <-> CEB-L0: passaggio per ? cavi cat6a da quantificare e verificare con layout CEB-L0